

**MOES** HOME, SMART HOME MOES

**Instruction Manual**  
Carbon Monoxide Alarm

ZigBee



ZSS-HM-CO-A-MS-DB26

**IMPORTANT! PLEASE READ CAREFULLY AND SAVE.**  
This user's manual contains important information about your CO Alarm's operation. If you are installing this CO Alarm for use by others, you must leave this manual—or a copy of it—with the end user.

**PACKING LIST**

PART NAME	QUANTITY
CO alarm	1 Piece
Mounting bracket	1 Piece
AA battery	2 Pieces
Screw	2 Pieces
Anchor plug	2 Pieces
Manual	1 Piece



CO alarm      Mounting bracket

AA battery      Screw      Anchor plug      Manual

Bitte scannen Sie den QR-Code, um das deutsche Handbuch, das Installationsvideo und die Funktionseinführung zu erhalten

Escanee el código QR para obtener el manual en español, el video de instalación y la introducción de la función

Veuillez scanner le code QR pour obtenir le manuel en français, la vidéo d'installation et l'introduction des fonctions


Отсканируйте QR-код, чтобы получить руководство на русском языке, видео по установке и описание функций

Scansionare il codice QR per ottenere il manuale in italiano, il video di installazione e la guida alle funzionalità. Video di installazione e funzionalità

Leia o código QR para obter o manual em português, o vídeo de instalação e a introdução das funções

Zeskanu kod QR, aby uzyskać instrukcję, filmy instalacyjne i funkcje

من فضلك قم بمسح رمز الاستجابة السريعة (QR-Code) للحصول على دليل المستخدم باللغة العربية و الفيديو للتثبيت ووصف الوظائف

请扫描二维码获取中文的说明书、安装视频及功能介绍

**DECLARATION OF CONFORMITY**

Hereby, WENZHOU NOVA NEW ENERGY CO., LTD declares that the radio equipment type ZSS-HM-CO-A is in compliance with Directive 2014/53/EU, 2014/20/EU, 2011/65/EU. The full text of the EU declaration of conformity is available at the following internet address:  
<https://www.moestech.com/blogs/news/zss-hm-co-a>

**1. TECHNICAL SPECIFICATIONS AND FEATURES**

**1.1 TECHNICAL SPECIFICATIONS**

Power	DC 2x1.5V Alkaline AA LR6 (NECTUIM)
Sensor lifespan	max. 10 years
Temperature	-10°C ~+40°C
Humidity	0%~95%RH non-condensing
Sound level	≥ 85dB at 3m
Alarm output	Visual and audible indication
Warm-up period	Approx. 100 seconds
Mounting method	Wall mounting or ceiling mounting
Conform to	EN 50291-1:2018
Battery life	5 years
Frequency Band	2,400-2,483 GHz
Maximum Radio Transmit Power	<+10dBm

- 1.2 FEATURES**
- Advanced electrochemical CO sensor technology
  - Digital temperature compensation technology
  - Low battery warning
  - Anti-RF interference
  - Mute mode/silence an unwanted alarm

**IMPORTANT:**  
The apparatus should be installed by a competent person.  
What you should know about carbon monoxide(CO)

Carbon monoxide(CO) is a dangerous poison. It is a colourless, odourless and tasteless gas. CO gas is generated by combustion of carbonaceous materials, namely, when not enough oxygen is available. This hazard can occur, for example, in open fireplaces, boilers, stoves and automobile exhaust. This toxin is bound in the blood where it prevents the transport of oxygen, which can cause death by suffocation. Everyone is susceptible but experts agree that unborn babies, pregnant women, senior citizens and people with heart or respiratory problems are especially vulnerable. Initial carbon monoxide poisoning symptoms are similar to the flu with no fever and can include dizziness, severe headaches, nausea, vomiting and disorientation. If symptoms of carbon monoxide poisoning are experienced, seek medical attention immediately, CO poisoning can be determined by a caarboxyhemoglobin test.

The following symptoms are related to CARBON MONOXIDE POISONING and should be discussed with ALL members of the household:  
1. Mild Exposure : Slight headache, nausea, vomiting, fatigue (often described as "flu-like" symptoms).  
2. Medium Exposure : Severe throbbing headache, drowsiness, confusion, fast heat rate.  
3. Extreme Exposure : Unconsciousness, convulsions, cardiorespiratory failure, death.

**Important information**

Note that there are other hazards where the CO detector will not trigger an alarm, such as gas leaks, fires or explosions. A CO detector is no substitute for smoke, fire, heat or other gas detectors! This device is intended for use within private housing. It is suitable neither for commercial or industrial applications nor for use on recreational craft or commercial vessels. This detector is intended to protect persons from the acute effects of carbon monoxide. It can not provide people with special medical properties complete security. If in doubt, you should consult a physician. Gas appliances/equipment should be installed by trained personnel. Get the devices/equipment in good mechanical condition and have them checked regularly. The installation of the CO detector should not be used as a substitute for proper installation, use and maintenance of fuel-fired facilities, including appropriate ventilation and exhaust systems.

**Danger CO Levels**

Concentration of CO in Air (ppm or per million)	APPROXIMATE INHALATION TIME AND SYMPTOMS DEVELOPED
50ppm	The maximum allowable concentration for continuous exposure for healthy adults in any 8-hour period.
200ppm	Slight headache, fatigue, dizziness, nausea after 2-3 hours.
400ppm	Frontal headaches within 1-2 hours, life threatening after 3 hours.
800ppm	Dizziness, nausea and convulsions within 45 minutes. Unconsciousness within 2 hours. Death within 2-3 hours.
1600ppm	Headache, dizziness and nausea within 20 minutes. Death within 1 hour.
3200ppm	Headache, dizziness and nausea within 5-10 minutes. Death within 25-30 minutes.
6400ppm	Headache, dizziness and nausea within 1-2 minutes. Death within 10-15 minutes.
12800ppm	Death within 1-3 minutes.

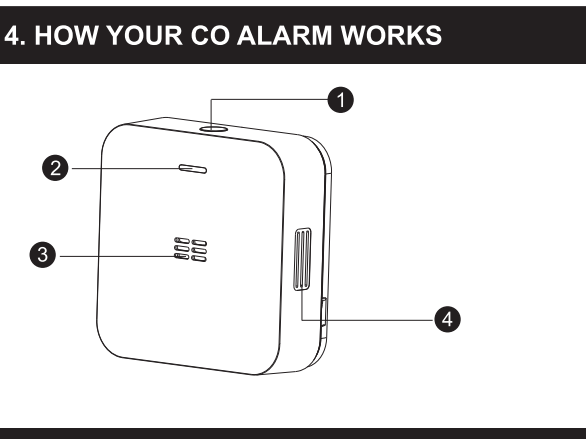
**2. ALARM CONDITIONS**

CARBON MONOXIDE CONCENTRATION AND RESPONSE TIME		
CO concentration	No alarm within	Alarm at the latest after
30 ppm	120 minutes	—
50 ppm	60 minutes	90 minutes
100 ppm	10 minutes	40 minutes
300 ppm	—	3 minutes

**3. IMPORTANT SAFETY INFORMATION**

**WARNING!**  
PLEASE READ AND SAVE THESE INSTRUCTIONS.  
**IMPORTANT:**

- This Carbon Monoxide (CO) Alarm is a sophisticated instrument that has been carefully designed and tested to detect CO built-up in residential environments.
- CO cannot be seen, smelled or tasted and can be fatal. The built-up of CO in the blood is called the carboxyhaemoglobin level and interferes with the body's ability to supply itself with oxygen. Depending on the concentration, carbon monoxide can kill in minutes.
- The most common sources of CO are malfunctioning, or misuse of gas appliances used for heating and cooking, vehicles engines, electric generators, blocked chimneys or



NOTE: "DISPLAY" item only covers the model with digital display.

CONDITION	OPERATION	LED	Buzzer
Power up and Warm-up	Install 2*AA battery correctly to power on the alarm. Warm-up lasts approx 100 seconds. When completed, LEDs all turn off.	The red/yellow/green LED flashes alternately for approx. 100 seconds.	One short beep
Stand-by condition	After warm-up period, the alarm turns to standby condition.	The green LED flashes every 30 seconds.	None
Test condition	Press and release Test/Hush/Networking Button to check whether CO alarm works normally.	Red LED flashes four times	The alarm sound four beeps.
Alarm condition	The presence of carbon monoxide.	Red LED flashes quickly (four flashes every 5 seconds)	beeps quickly (four beeps every 5 seconds)
Low battery	None	Yellow LED flashes every 30 seconds.	One beep every 30 seconds
Sensor failure	None	Yellow LED flashes twice every 30 seconds.	Two beeps every 30 seconds
End of life	None	Yellow LED flashes twice every 30 seconds.	One long beep and one short beep every 30 seconds
Hush condition	Silence an unwanted alarm, push and release the Test/Hush/Networking button, it will enter hush mode.	RED LED flashes quickly (four flashes every 5 seconds)	None(Hush condition duration: about 10 minutes)
	When the CO alarm is alarming as low battery, push the Test/Hush/Networking button, it will enter hush mode.	Yellow LED flashes every 30 seconds.	None(Hush condition duration: about 12 hours)

\* Attention: If remote silencing function is available, any remote silencing feature shall only be used in line of sight of the CO alarm. Hushing: When the CO Alarm is sounding an alarm after a suspected false alarm, you can press the Test/Hush button and the CO alarm will remain silent for 10 minutes. While the Alarm is silenced, it will continue to monitor the air for CO. The alarm will sound again, if CO level still at dangerous level. The Hush Feature is intended to temporarily silence the Alarm horn, if will not correct a CO problem.

flues, portable fuel burning heaters, fireplaces, fuel powered tools and operating a grill in an enclosed space.

- Indications of CO poisoning include symptoms similar to the flu, but with no fever. Other symptoms include dizziness, fatigue, weakness, headache, nausea, vomiting, sleepiness and confusion. Everyone is susceptible to the danger of CO, but unborn babies, small children, pregnant women, senior citizens and people with heart or respiratory problems may experience symptoms sooner. Each year a qualified technician should inspect and clean your heating system, vents, chimney, and flues.
- Dangers, Warnings, and Cautions alert you to important operating instructions or to potentially hazardous situations. Pay special attention to these items.
- THIS IS NOT A SMOKE ALARM!** This CO Alarm is designed to detect carbon monoxide from ANY source of combustion. It is NOT designed to detect smoke, fire, or any other gas.
- This CO Alarm is approved for use in single-family residences. It is NOT designed for marine or RV use.

**CAUTION!**

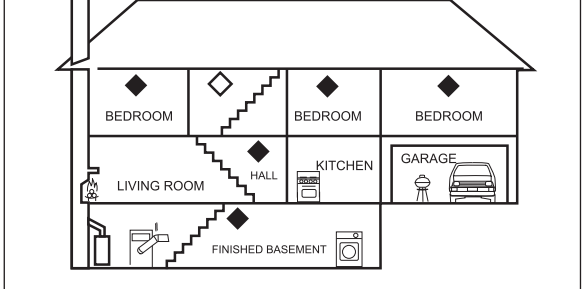
- This CO Alarm will only indicate the presence of carbon monoxide gas at the sensor. Carbon monoxide gas may be present in other areas.

**WARNING!**

- Always check your home for a potential problem after any alarm. Failure to do so can result in injury or death.
- NEVER ignore any alarm. If there is any question as to the cause of an alarm it should be assumed that the alarm is due to dangerous levels of carbon monoxide and the dwelling should be evacuated. See section 9 WHAT TO DO IF THE ALARM SOUNDS for more information on how to respond to an alarm. Failure to respond can result in injury or death.
- Test this Carbon Monoxide Alarm once a week. If it ever fails to test correctly, have it replaced immediately! If the CO Alarm is not working properly, it cannot alert you to a problem.
- This product is intended for use in ordinary indoor locations of family living units. Individuals with medical conditions that may make them more sensitive to carbon monoxide may consider using warning devices which provide audible and visual signals for carbon monoxide concentrations under 30 ppm. For additional information on carbon monoxide and your medical condition contact your physician.

**5. WHERE TO LOCATE**

- A CO Alarm should be centrally located outside of each separate sleeping area in the immediate vicinity of the bedrooms. For added protection, install additional CO Alarms in each separate bedroom, and on every level of your home.
- If your bedroom hallway is longer than 40 feet (12 metres), install a CO Alarm at BOTH ends of the hallway.
- In a single-level home:
  - Install at least one CO Alarm near or within each separate sleeping area.
  - For added protection, install an additional CO Alarm at least 20 feet (6 metres), away from the furnace or fuel burning heat source.
- In a multi-level home—(same as above plus):
  - Install at least one CO Alarm near or within each separate sleeping area.
  - For added protection, install at least one CO Alarm on each level of the home. If you have a basement, install that CO Alarm at the top of the basement stairs.



- CO alarms for limited protection
- Additional CO alarms for better coverage
- For added protection, install an additional CO Alarm at least 20 feet (6 metres) away from the furnace or fuel burning heat source.

**6. LOCATIONS TO AVOID**

**IMPORTANT:** Improper location can affect the sensitive electronic components in this alarm. To avoid causing damage to the unit, to provide optimum performance, and to prevent unnecessary nuisance alarms, DO NOT locate CO alarms :

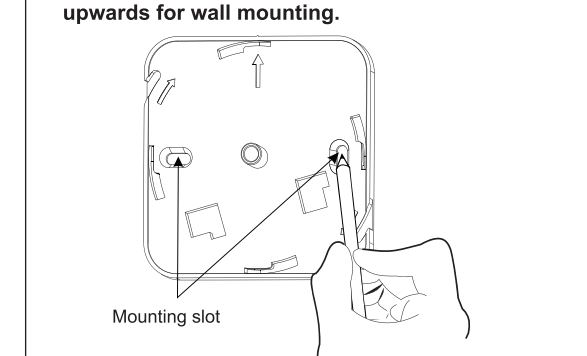
- In garages, kitchens, furnace rooms, or in any extremely dusty, dirty or greasy areas.
- Where combustion particles are produced. Combustion particles form when something burns. Areas to avoid include poorly ventilated kitchens, garages, and furnace rooms. Keep units at least 20 feet (6 metres) from the sources of combustion particles (stove, furnace, water heater, space heater) if possible. In areas where a 20-foot (6 metres) distance is not possible — in modular, mobile, or smaller homes, for example — it is recommended the CO Alarm be placed as far from these fuel-burning sources as possible. The placement recommendations are intended to keep these Alarms at a reasonable distance from a fuel-burning source, and thus reduce "unwanted" alarms. Unwanted alarms can occur if a CO Alarm is placed directly next to a fuel-burning source. Ventilate these areas as much as possible.
- Within 5 feet (1.5 metres) of any cooking appliance.
- In extremely humid areas. This Alarm should be at least 10 feet (3 metres) from a bath or shower, sauna, humidifier, vaporizer, dishwasher, laundry room, utility room or other source of high humidity.
- In areas where temperature is colder than -10°C or hotter than 40°C. These areas include non-air-conditioned crawl spaces, unfinished attics, uninsulated or poorly insulated ceilings, porches, and garages.
- In turbulent air, like near ceiling fans, heat vents, air conditioners, fresh air returns, or open windows. Blowing air may prevent CO from reaching the sensors.
- In direct sunlight.

**Caution:**

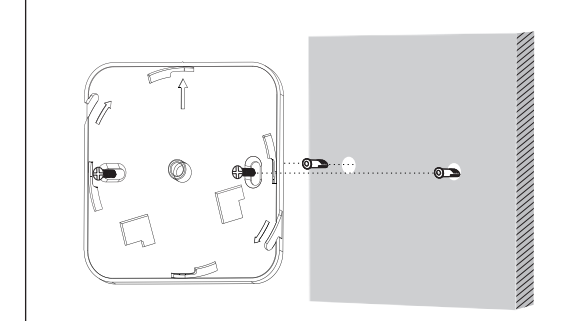
- When scouring or stripping a wooden floor, painting, wallpapering or using adhesive or aerosol, you should remove the carbon monoxide alarm and keep it in a safe place to prevent damaging the sensor.
- High concentrations of the following substances can damage the sensor, which often results in a false alarm: methane, propane, isopropyl butane, ethylene, ethanol, isopropyl alcohol, benzene, toluene, ethylacetate, hydrogen, hydrogen sulfide and sulfur dioxide. Also aerosol sprays, alcoholic products, paint, solvents, adhesive, hair spray, aftershave, perfume and certain cleaning agents can cause damage.

**7. HOW TO INSTALL**

- 7.1 MOUNTING**  
For wall mounting or ceiling mounting, follow these steps:
  - Place the mounting bracket against the mounting surface (wall or ceiling), and mark the mounting surface with a pencil through two slots of the bracket.
  - Drill two holes with a 3/16 inches (5mm) drill on the two marks.




**Note: Keep CO alarms away from getting plaster dust when you drill the holes.**



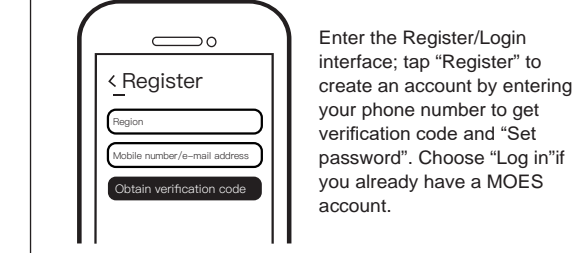
- After the mounting bracket is secured to the wall, insert two new AA batteries into the alarm's battery compartment correctly, and then place the screwdriver into the disassemble hole and meanwhile rotate the alarm into the mounting bracket in the direction from "δ" to "δ" until it snaps into place.

**8. PREPARATION FOR USE**

- 1. Download MOES App on App store or scan the QR code**
- 

MOES APP is upgraded as much more compatibility than Tuya Smart/Smart Life APP. Functional well for scene controlled by Siri/widget and scene recommendations as the fully new customized service. (Note: Tuya Smart/Smart Life APP still works, but MOES APP is highly recommended)

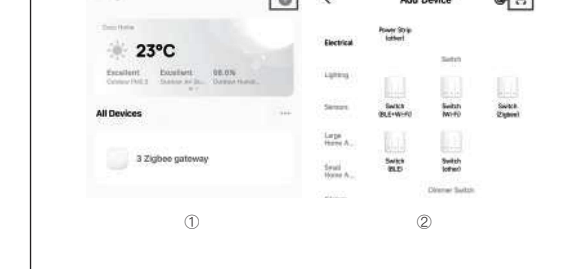
**2. Registration or Log in**



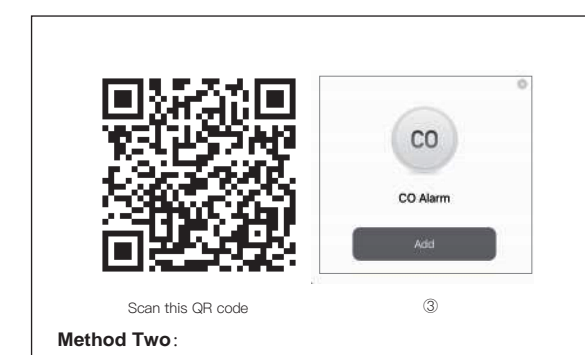
**9. STEPS FOR CONNECTING THE APP TO THE DEVICE**

Ensure the device is within the effective signal coverage of your smart ZigBee gateway for successful connection into the ZigBee gateway in MOES APP

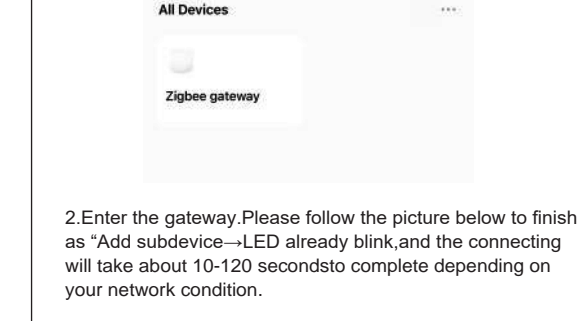
**Method One:**  
Scan the QR code to configure the network guide.  
1. Make sure your MOES APP has successfully connected to a Zigbee gateway.



**10. BATTERY REPLACEMENT**



**7.2 BATTERY REPLACEMENT**  
To replace the batteries in this CO alarm, please perform the following steps:  
(1) Place the screwdriver into the disassemble hole, meanwhile rotate the device out of the mounting bracket in the direction from "δ" to "δ", as show below:

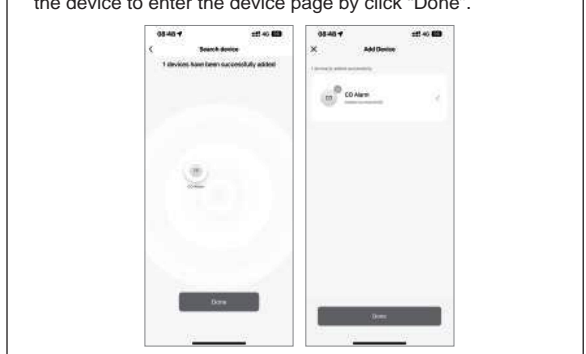


(2) Replace the used batteries with 2 new AA batteries, about 5 seconds later, the device will be powered on, and beep one sound, which indicates the batteries are replaced correctly, then rotate the device back into mounting bracket.

**IMPORTANT:** The battery should be installed in correct positive and negative electrode as indicated inside the battery compartment.

Constant exposures to high or low humidity may reduce battery life. After installing or changing the batteries, test the alarm to make sure it works normally.

**4. Add the device successfully, you can edit the name of the device to enter the device page by click "Done".**



5. Click "Done" to enter the device page to enjoy your smart life with home automation.



**10. TROUBLESHOOTING**

PROBLEM	SOLUTION
Press Test button, CO alarm shows no response.	Please check whether batteries are properly installed. If no problem with batteries and CO alarm still shows no response, please contact your local distributor.
Yellow LED flashes and the alarm sounds one beep every 30 seconds.	Battery is low – REPLACE IT IMMEDIATELY!
Yellow LED flashes twice and the alarm sounds two beeps every 30 seconds.	Sensor or unit malfunction. Please contact your local distributor.

**11. MAINTENANCE**

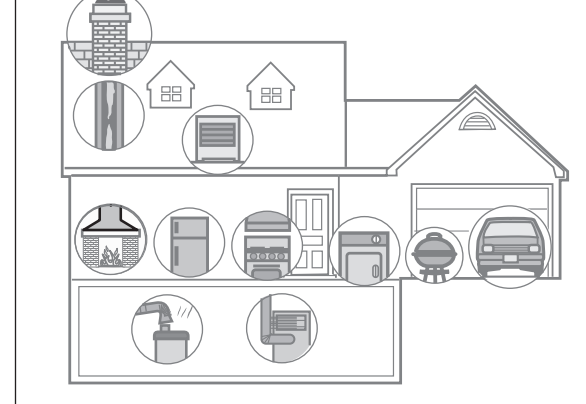
- To keep your alarm in good working order, you must follow these steps:
- Test the alarm once a week by pressing the Test button.
  - Vacuum the alarm cover once a month to remove accumulated dust.
  - Never use detergents or solvents to clean the alarm. Chemicals can permanently damage or temporarily contaminate the sensor.
  - Avoid spraying air fresheners, hair spray, paint or other aerosols near the alarm.
  - Do not paint the unit. Paint will seal the vents and interfere with proper sensor operation.

**12. WHAT TO DO IF THE ALARM SOUNDS**

- Call your emergency services (fire dept.).
- Immediately move to fresh air - outdoors or by an open door/window. Do a head count to check that all persons are accounted for. Do not re-enter the premises nor move away from the open door/window until the emergency services responders have arrived, the premises have been aired out, and your alarm remains in its normal condition.
- After following steps 9.1-9.2, if your alarm reactivates within a 24 hour period, repeat steps 9.1-9.2 and call a qualified appliance technician to investigate for sources of CO from fuel burning equipment and appliances, and inspect for proper operation of this equipment.

**12.4** If problems are identified during this inspection have the equipment serviced immediately. Note any combustion equipment not inspected by the technician and consult the manufacturer's instructions, or contact the manufacturer's directly, for more information about CO safety and this equipment. Make sure that motor vehicles are not, and have not been, operating in an attached garage or adjacent to the residence.

**12.4** Do not press the Test Button, the Test Button can not cancel the Alarm.



**13. LIMITATIONS OF CO ALARMS**

- CO alarms may not waken all individuals. If children or others do not readily waken to the sound of the CO alarm, or if there are infants or family members with mobility limitations, make sure that someone is assigned to assist them in the event of an emergency.
- This CO Alarm will not sense carbon monoxide that does not reach the sensor. CO may be present in other areas. Doors or other obstructions may affect the rate at which CO reaches the CO Alarm. For this reason, if bedroom doors are usually closed at night, we recommend you install a CO Alarm in each bedroom and in the hallway between them.
- CO Alarms may not sense CO on another level of the home. For example, a CO Alarm on the second level, near the bedrooms, may not sense CO in the basement. For this reason, one CO Alarm may not give adequate warning. Complete coverage is recommended. Place CO Alarms on each level of the home.

maintenance fee shall be charged for repair. We have the right to refuse to provide warranty service if:  
1. Products with damaged appearance, missing LOGO or beyond the service term.  
2. Products that are disassembled, injured, privately repaired, modified or have missing parts  
3. The circuit is burned or the data cable or power interface is damaged  
4. Products damaged by foreign matter intrusion (including but not limited to various forms of fluid, sand, dust, soot, etc.)

**15. RECYCLING INFORMATION**

All products marked with the symbol for separate collection of waste electrical and electronic equipment (WEEE Directive 2012/19/EU) must be disposed of separately from unsorted municipal waste. To protect your health and the environment, this equipment must be disposed of at designated collection points for electrical and electronic equipment designated by the government or local authorities. Correct disposal and recycling will help prevent potential negative consequences for the environment and human health. To find out where these collection points are and how they work, contact the installer or your local authority.

- \* Always throw used batteries to the battery recycling bin
- \* If the battery is built-in inside the product, open the product and remove the battery.

**Warning:**

Except the battery replacement, it's forbidden for the user to disassemble the CO alarm, which may cause damage to the CO alarm.

**Caution:**

The CO alarm is for indoor use only, and it is not designed for use in a recreational vehicle or mobile home. The CO alarm should be installed by a competent person. This apparatus is designed to protect individuals from the acute effects of carbon monoxide exposure. It will not fully safeguard individuals with specific medical conditions. If in doubt, please consult a medical practitioner.

**16. WARRANTY CARD**

**Product Information**

Product Name: \_\_\_\_\_  
 Product Type: \_\_\_\_\_  
 Purchase date: \_\_\_\_\_  
 Warranty Period: \_\_\_\_\_  
 Dealer Information: \_\_\_\_\_  
 Customer's Name: \_\_\_\_\_  
 Customer Phone: \_\_\_\_\_  
 Customer Address: \_\_\_\_\_

**Maintenance Records**

Failure date	Cause Of Issue	Fault Content	Principal

Thank you for your support and purchase at we Moes, we are always here for your complete satisfaction, just feel free to share your great shopping experience with us.

★★★★★

If you have any other need, please do not hesitate to contact us first, we will try to meet your demand.

**FOLLOW US**

 @moesmart   
  @moes\_official   
  @moes\_smart   
  www.moes.net

**EWATOST CONSULTING LTD**  
 Address: Suite 11, First Floor, Moy Road Business Centre, Taffs Well, Cardiff, Wales, CF15 7QR  
 Tel: +44-292-1680945  
 Email: contact@ewatmaster.com

**E-CrossStu GmbH**  
 Malnzir Landstr. 69\_80329 Frankfurt am Main  
 Email: E-crossstu@web.de  
 Tel: +496932967874  
 Made in China

**Manufacturer:**  
 WENZHOU NOVA NEW ENERGY CO.,LTD  
 Address: Power Science and Technology Innovation Center, NO.238, Wei 11 Road, Yueqing Economic Development Zone, Yueqing, Zhejiang, China  
 Tel: +86-577-11898115  
 After-sale Service: service@moeshouse.com